

Willow Class
Term 1 Newsletter

Dear Parents,

Welcome back - we hope you enjoyed the sunny summer break. This term Willow class are exploring Roald Dahl and a variety of his magical stories! We will investigate many of Dahl's different characters, settings and plots in order to create stories. In DT, the children will be making their own scarf which is inspired by Roald Dahl's time in the RAF. In music, they will be singing some of the fantastic songs from the film of Charlie and the Chocolate Factory! Science will be exploring States of Matter where the children will make their own 3D diagram of the water cycle!

Home Learning - Due after half term break - Friday 4th November 2016.

Choose one of the texts we have explored and create a story, piece of artwork or animation!

| | |
|-------------------------|---|
| Reading | Please read with your child regularly, even if it is just one page. Their books and reading records need to be in everyday for 1:1 reading. You may like to add a positive or helpful comment in the reading diary but please acknowledge the fact that the book has been read by signing and dating in the comments book. Your child will be working towards a reward in class for reading 3 times a week. |
| Spellings | We will be sending home weekly spelling investigations. They will bring home activities to complete linked to the pattern that they are learning. The homework will be sent out on a Friday and due in the following Thursday. This learning will be followed up during literacy lesson and through discrete spelling sessions. |
| Mathematics | Maths homework will be sent out on a Friday and will be due in the following Thursday. This should be completed in the children's Maths Homework book. |
| Grammar and Punctuation | Grammar and Punctuation practice will be sent home on a fortnightly basis (also on a Friday) children will have 2 weeks to complete this task. |

Helping to enrich our topics

If anyone has any experience or items that may help us with any of the work above that we could hear about or borrow, they would be gratefully received.

Reminders - Please can you make sure your child brings in a water bottle each day with fresh water.

PE - Our PE lessons are on a **Monday and a Thursday**, it is essential that children have their PE kits in school on these days.

Thank you for your continued support.

Miss Axell

Useful websites during this topic:

<https://www.roalddahl.com/>

<http://www.roalddahl.com/museum>

<http://primaryfacts.com/2671/46-roald-dahl-facts/>

Wonderful World of Roald Dahl!

Our Learning Map

Literacy



Rhyming poems



Characters!



Settings



Our own story!



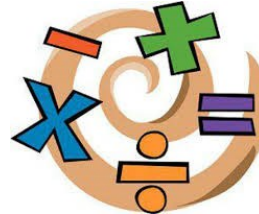
Numeracy



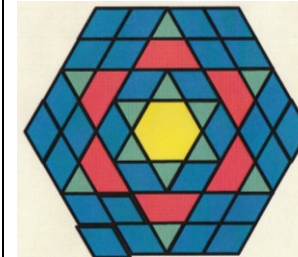
Place value

| thousands | hundreds | tens | ones |
|------------|----------|---------|--------|
| | | | |
| 1 1,000 | 2 200 | 4 40 | 7 7 |

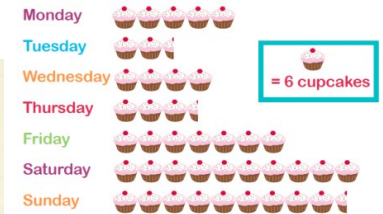
Calculation



Shape



Pictograms



ICT



Technology through the years



E-Safety



PSHE



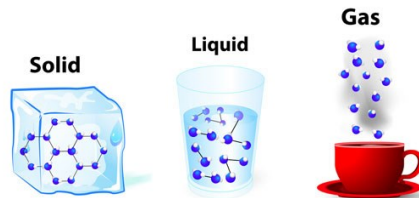
New Beginnings and Friendship



Science

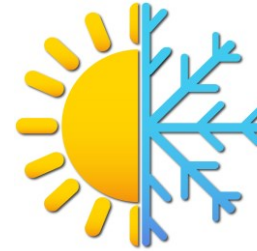


Solid, Liquid and Gas

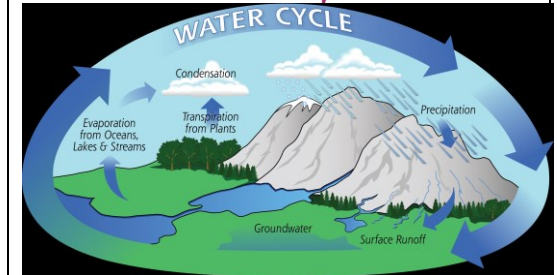


States of Matter

Heating and Cooling



Water Cycle



Music

Singing! Charlie and the Chocolate Factory songs!



PE

Basketball and netball



RE

What were the key events in Jesus' life? Harvest Festival



Questions you can ask your children this term

Who was Roald Dahl?

What books did he write?

What characters do you know from some of the Roald Dahl books?

What is happening in Charlie and the Chocolate Factory at the moment?

Tell me about different states of matter? What are they?

What states can water be in?